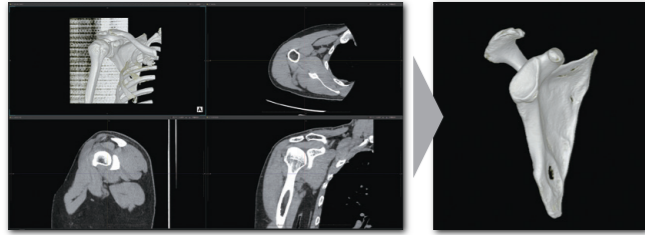


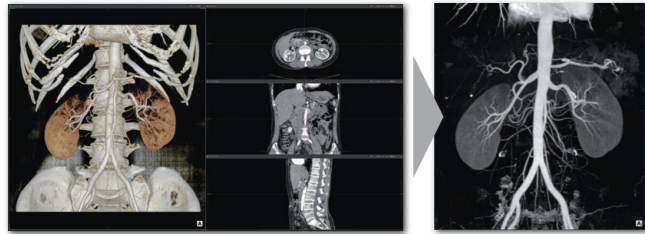
## 3D Function

3D volume rendering and MIP/MPR processing are available for CT and MRI images with one click. Basic functions of image processing such as bone removal and gradation processing are available, and enable to diagnosis or to refer the study with easy operation. 3D images can be manipulated on the same viewer as 2D images, and 3D derived images can be easily generated by selecting functions according to the purpose.



### 3D image

Removing selected part such as bone is possible with one-click. This function enables to check joint surfaces such as bones 3-dimensionally.

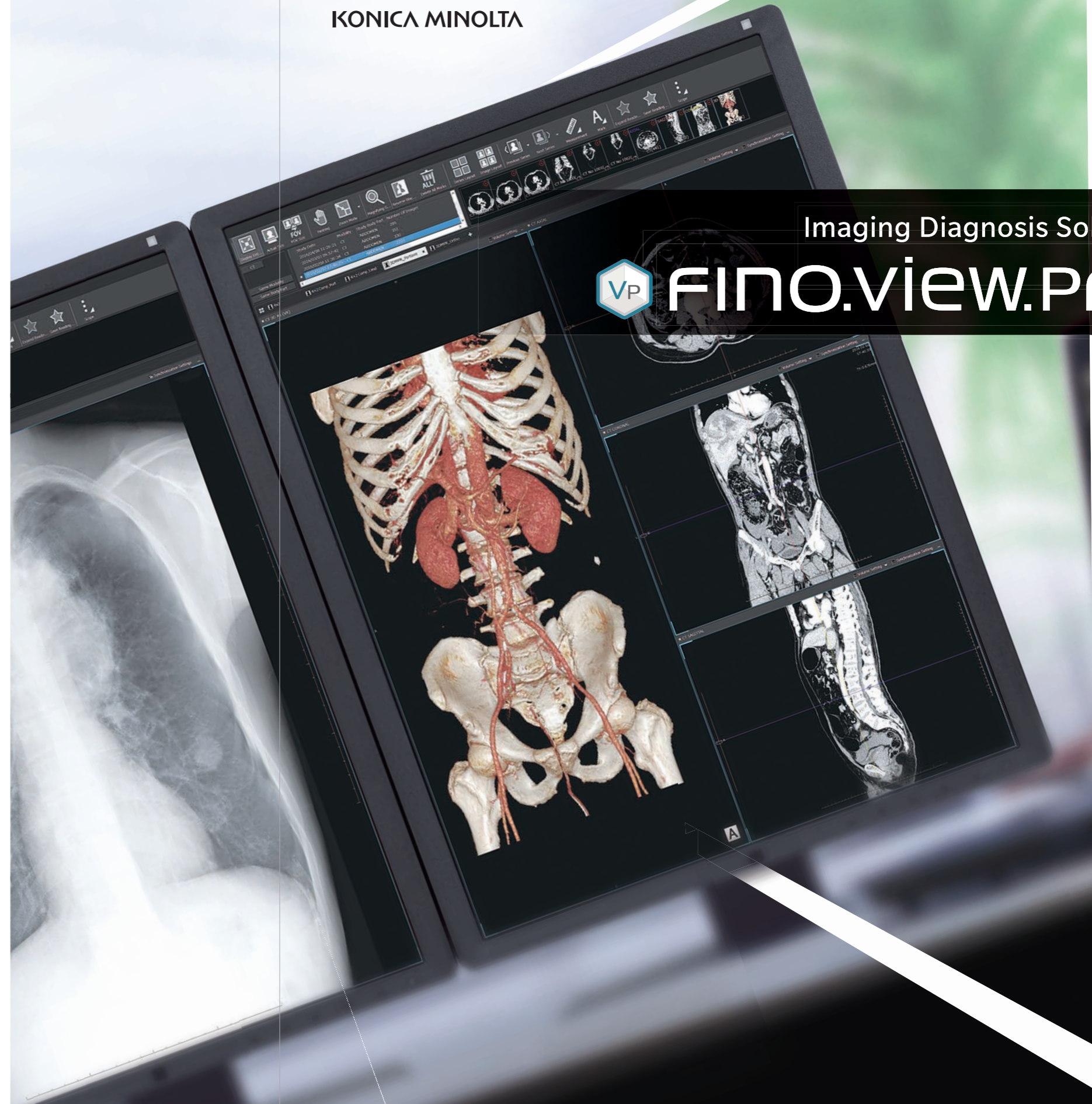


### Bone removal image

Bone-removed images can be created by combining bone removal and gradation processing functions.



KONICA MINOLTA



Imaging Diagnosis Solution



# FINO.view.PRO

★ May, 2023. The specifications are subject to change without prior notice.



KONICA MINOLTA

Manufactured by

**KONICA MINOLTA, INC.**

1 Sakuramachi, Hino-shi, Tokyo, 191-8511, Japan

Distributed by:

RETHINK WHAT'S POSSIBLE

Giving Shape to Ideas



<Features>

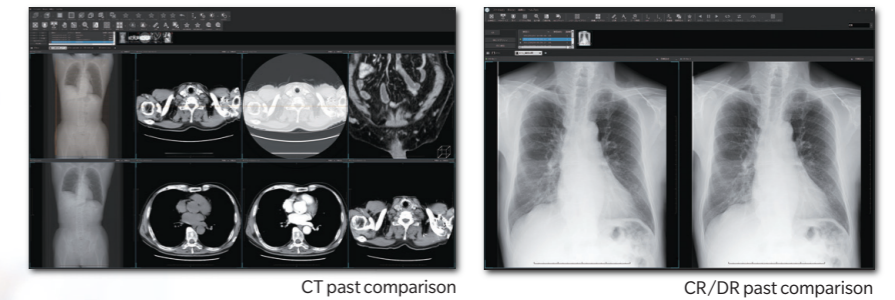
- 1 Multi-functional Viewer for various operations
- 2 The system reduces the burden of image interpretation with its high-speed display and easy-to-understand usability.
- 3 3D functions (volume rendering, MIP/MPR) enable to create secondary images comfortably with its easy operations. (optional)



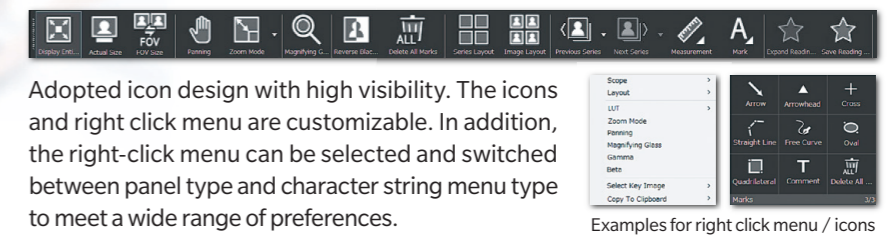
# Faster, more comfortable, Efficient reading station

## Hanging Protocol

The system can configure display layout for each modalities and body parts. With creating a hanging protocol for a layout that matches the interpretation purpose, efficient interpretation can be achieved with a single click after the examination is opened.



## Functional icons and menus



Adopted icon design with high visibility. The icons and right click menu are customizable. In addition, the right-click menu can be selected and switched between panel type and character string menu type to meet a wide range of preferences.

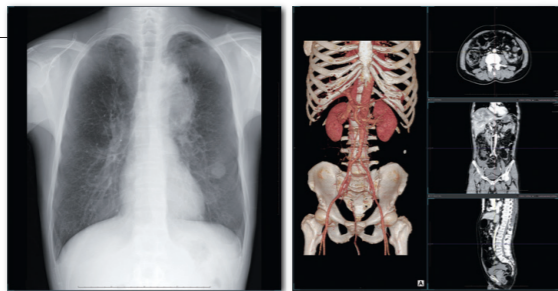
Examples for right click menu / icons

# VP FINO.VIEW.PRO

## Various operations

### Respiratory / screening

Supports early detection and follow-up of lung cancer cases by comparing chest X-ray images and CT studies.

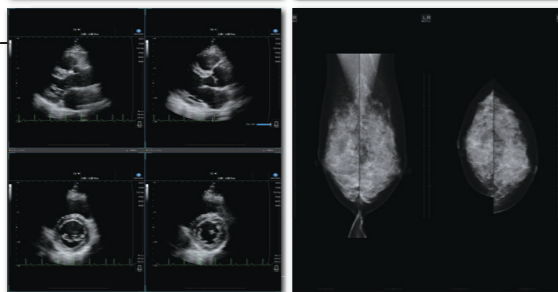


### Surgery

Supports rapid diagnosis and informed consent by displaying CR/DR images and CT studies on single screen for surgical diagnosis such as bone fractures.

### Cardiology

Supports efficient diagnosis by displaying examinations such as chest x-ray images, echocardiograms, cardiac catheterization videos, and electrocardiograms in single viewer.

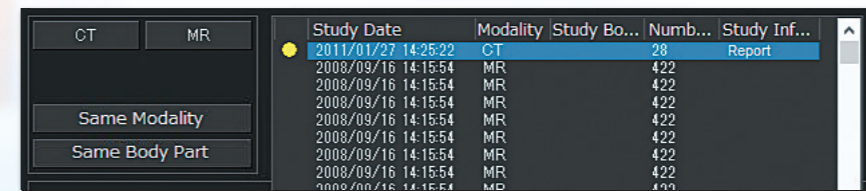


### Breast surgery

Supports breast tomosynthesis display and mammogram reading support functions such as breast area detection, nipple detection, breast paring, CAD result display.

## Filtering studies by modality/study body part

From the study list, studies can be filtered by specific modality or study body part. Furthermore, moving the mouse cursor over the past study, the entire list is displayed, the target study can be selected smoothly. In addition, it is possible to filter a specific modality or study body part, or to filter the most recent past study of the same modality or study body part instantly.



Filtering icon / related study list display

## Alert function for not displayed images

From the viewpoint of medical safety, the system enabled to confirm the presence or absence of undisplayed images easily in thumbnail area. After displaying the image, the red circle on the upper right of each thumbnails will disappear. In case of displaying slice images, after displaying all the slice images, the red double circle will disappear.

	not displayed
	partially displayed *
	displayed all images

\*Some images are not displayed